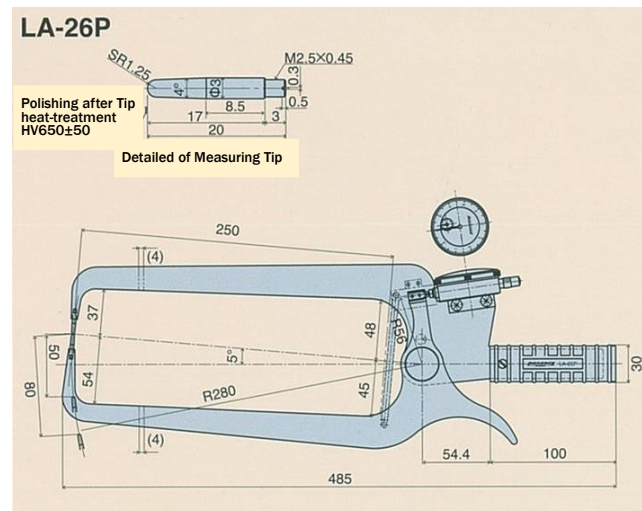
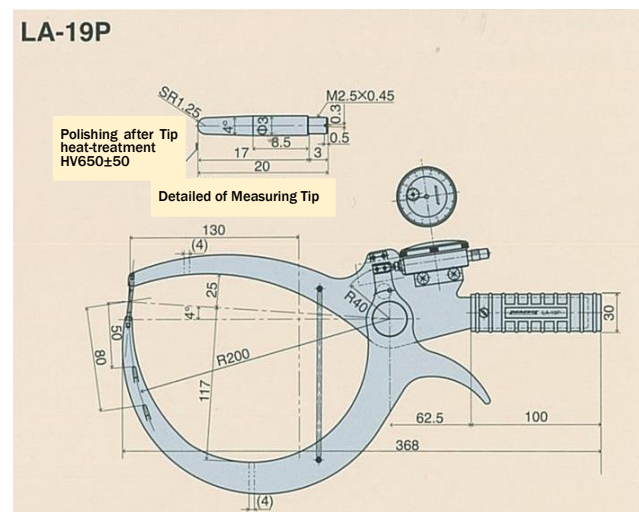
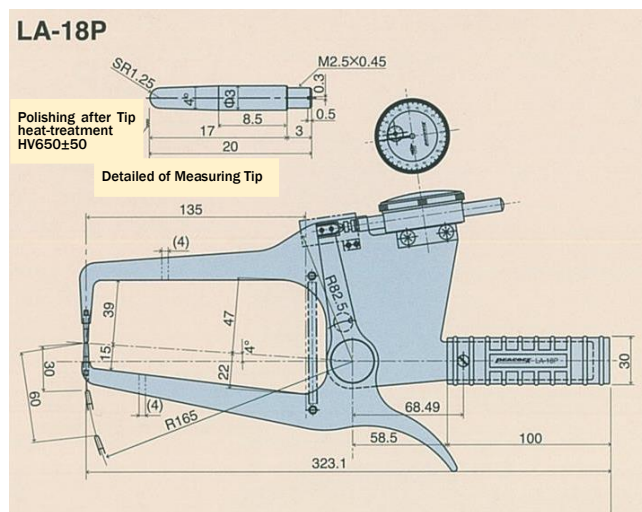
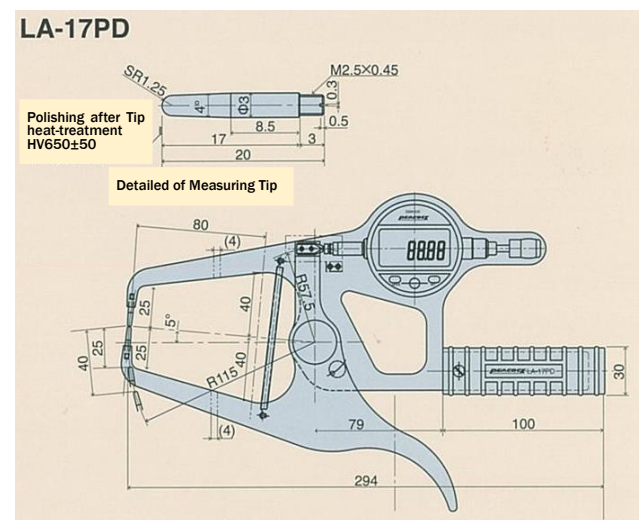
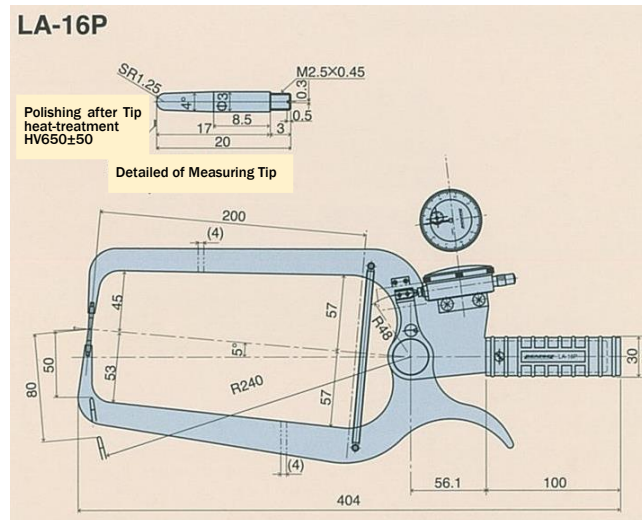


Outer dimensions



Specifications and appearance are subject to change without notice due to improvement.

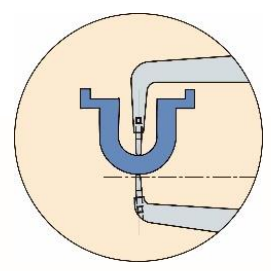
PEACOCK
OZAKI MFG. CO., LTD.
 1-63-11 TOKIWADAI ITABASHI-KU, TOKYO
 174-0071 JAPAN
 TEL: 81-3-3966-1109
 FAX: 81-3-3558-1868
 BRANCHES: TOKYO, OSAKA, NAGOYA
 FACTORIES: CHIBA, AKITA



New

Caliper Gauges

Smart & Convenient

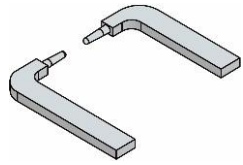


Made in Japan

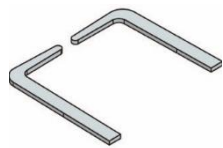
OZAKI MFG. CO., LTD.

New Caliper Gauges are Smart & Convenient.

New type

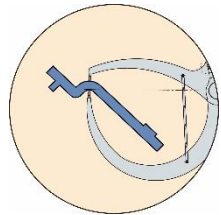
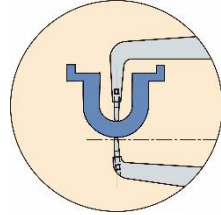
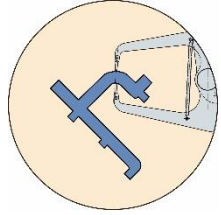


Conventional type



Upper and bottom tips are more radii contact points which makes easier to measure a thickness consecutively.

Tip of the contact points (SR1.25) can measure a curved surface which is a difficult place to measure.

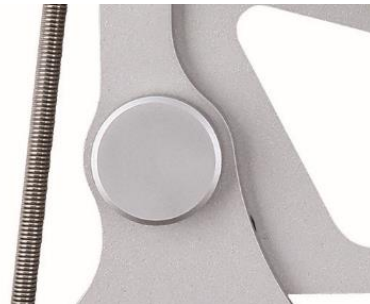


It is easy to read a value thanks to dial with the face upward.

Dial with the face upward makes the reading easy.

New type is much more durable.

New type's bearing axis which is the most important parts uses Dia. 27mm instead of Dia. 19mm current type uses and the thickness of New type frame is 4mm instead of current 3mm, which makes new type more durable.



New Caliper Gauges are available in Digital type.

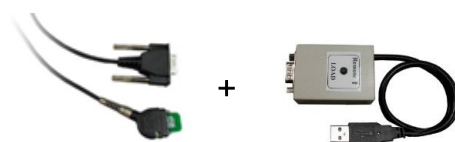
LA-17PD

Graduation: 0.01mm
Range: 0 ~ 25mm
Max opening: 40mm
Throat depth: 80mm



Data Communication

RS-232C Cable + Input Adapter
No. KB-232C + No. IF-21B



IF-21B with KB-232C can transfer a data to a spreadsheet such as EXCEL of your PC.

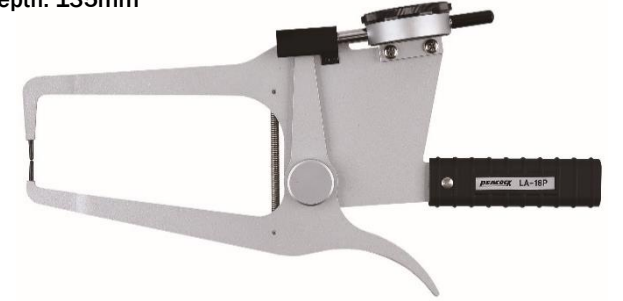
LA-16P

Graduation: 0.05mm
Range: 0 ~ 50mm
Max opening: 80mm
Throat depth: 200mm



LA-18P

Graduation: 0.01mm
Range: 0 ~ 30mm
Max opening: 60mm
Throat depth: 135mm



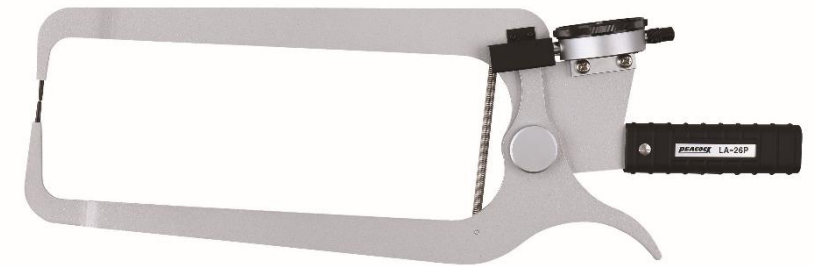
LA-19P

Graduation: 0.05mm
Range: 0 ~ 50mm
Max opening: 80mm
Throat depth: 130mm

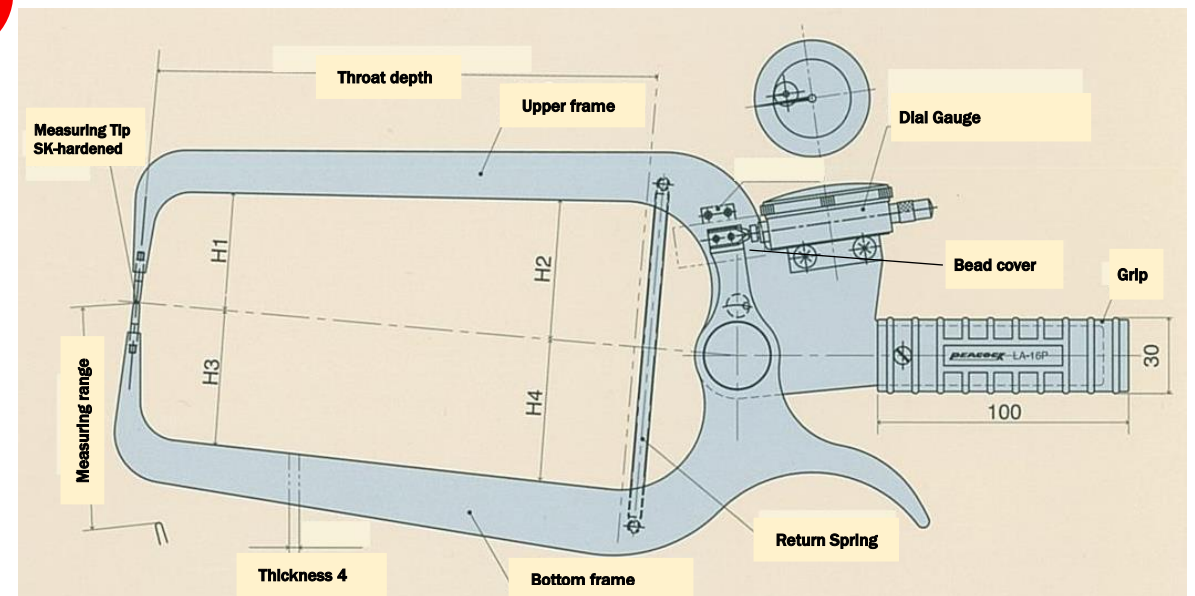


LA-26P

Graduation: 0.05mm
Range: 0 ~ 50mm
Max opening: 80mm
Throat depth: 250mm



Name of Parts



Specifications

Model No.	Graduation (mm)	Range (mm)	Indication error (mm)	Max opening (mm)	Throat depth (mm)	Dimensions (mm)				Weight (g)
						H1	H2	H3	H4	
LA-16P	0.05	0 ~ 50	±0.15	80	200	45	57	53	57	1,340
LA-17PD	0.01	0 ~ 25	±0.03	40	80	25	40	25	40	1,260
LA-18P	0.01	0 ~ 30	±0.03	60	135	39	47	15	22	1,200
LA-19P	0.05	0 ~ 50	±0.15	80	130	-	-	-	-	1,260
LA-26P	0.05	0 ~ 50	±0.15	80	250	37	48	54	45	1,420